

BURR BLOC

removable anti-ram raid bollard

In 1989 Furnitubes and the Dixons Stores Group undertook a joint research programme to find the most effective means of protection against Ram Raiding. The findings led to the development of the Burr Bloc, the first removable security bollard specifically designed to protect shutter doors.

Since its introduction in 1990, the Burr Bloc has proven itself by foiling every attempted ram raid on Dixons premises and is now installed at Dixons Group stores nationwide.

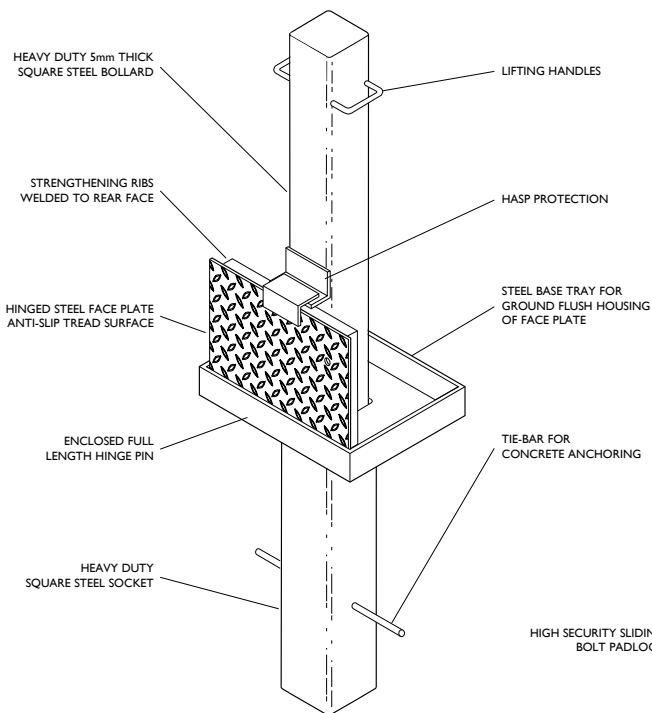
As a result of their continuous research and development programme, Furnitubes now offer the advanced Burr Bloc mk.6. Along with numerous strength and operational enhancements, the mk.6 boasts an integral lock fitted to the body of the bollard for use with registered security keys.



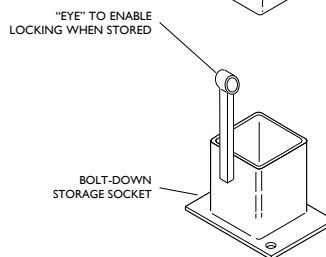
▲ BURR BLOC MK.6 operation

◀ BURR BLOC MK.6 integral lock detail

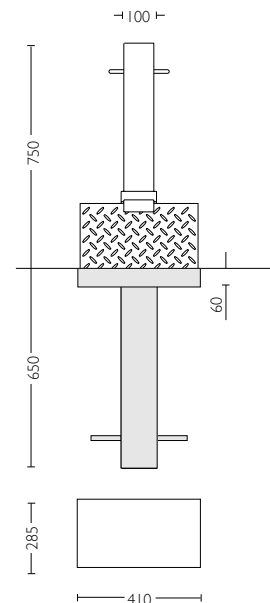
- heavy duty 5mm thick steel bollard
- lifting handles
- high security integral lock
- tie bar for concrete anchoring
- deep 650mm root



▲ BBLOC 6 shown locked into main socket
ISOMETRIC VIEW NOT TO SCALE



▲ BURR BLOC MK.6 & storage socket shown separately



BURR BLOC MK.6

BBLOC 6
Steel Removable Security Bollard,
Main Socket, Storage Socket,
Lid Lifting Handle, Padlock and
Registered Security Keys
17 kg lifting weight

TECHNICAL

Finish

Hot-dipped zinc galvanised.

Keyed Alike

When ordering Burr Blocs with integral locks, specify whether all posts are required keyed alike or to have individually numbered locks.

Replacement Locks

The integral locks can be replaced separately if damaged. Call our Sales Dept for more information.

Installation

For the best protection of a building, bollards should be installed no less than 2m from the fascia to be protected.

The distance from centre to centre of Burr Blocs should be no more than 1.4m. When positioned next to a fixed bollard this dimension should be no more than 1.25m

Sold Secure

Furnitubes are delighted to advise its customers that the Burr Bloc Mk6 uses a multi-lock approved padlock which holds the Sold Secure accreditation.



Product Codes are in **bold type**. Dimensions are in mm, are approximate and do not form any part of the contract.

We reserve the right to change the design and specification on any item offered and, where possible, notification will be made.

